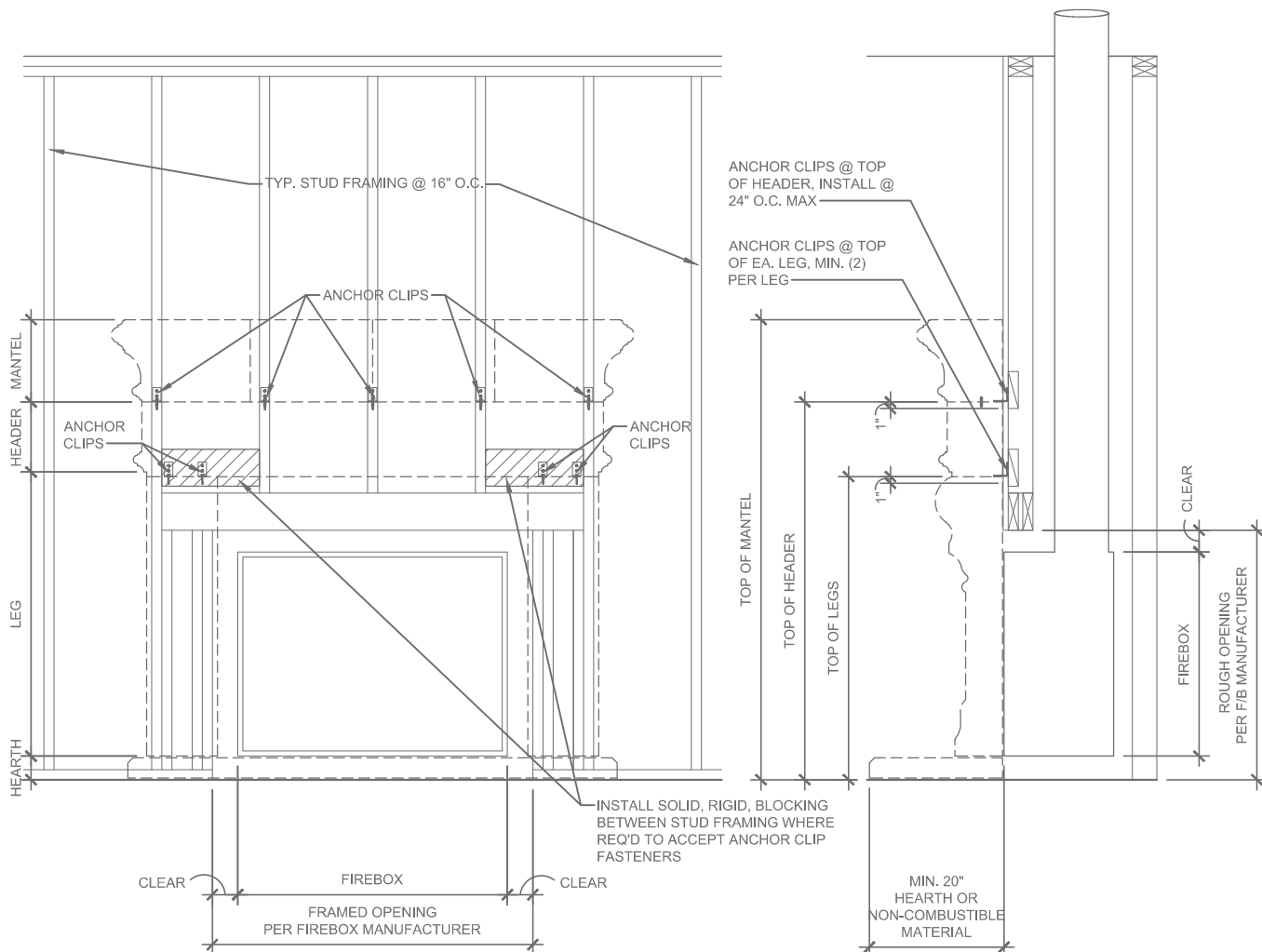


FRAMING INSTRUCTIONS



MOST FIREPLACE MANTELS AND SURROUNDS PRODUCED BY DEVINCI CAST STONE WILL INSTALL BY STACKING THE FACTORY PRE-FIT COMPONENTS AGAINST THE WALL AND ANCHORING THEM INTO THE STUD FRAMING BEYOND. WHERE ANCHOR POINTS DO NOT ALIGN WITH THE FRAMING IN THE WALL, IT WILL BE NECESSARY TO INSTALL SOLID WOOD BLOCKING IN THE WALL BETWEEN THE STUDS.

MOST MODELS INSTALL BY FIRST SETTING THE LEGS INTO POSITION AND ANCHORING AT THE TOP, THEN PLACING THE ONE PIECE HEADER ON TOP OF THE LEGS AND ANCHORING IT ALONG THE TOP EDGE INTO TWO OR MORE AVAILABLE STUD LOCATIONS AS SHOWN IN THE DRAWING. ALL OTHER COMPONENTS WILL INSTALL ON TOP OF THE HEADER AND MAY BE PINNED TO THE COMPONENTS BELOW. PLEASE REFER TO THE DETAILED INSTALLATION INSTRUCTIONS FOR YOUR MODEL.

WHERE POSSIBLE USE $\frac{3}{4}$ " T.G. PLYWOOD IN LIEU OF GYP. WALL BOARD BEHIND FIREPLACE TO RECEIVE ANCHORS WITHOUT FASTENERS ANCHORING DIRECTLY INTO FRAMING MEMBERS.

PLYWOOD WALL BOARD MUST MAINTAIN THE MIN. REQUIRED DISTANCE FROM THE FIREBOX TO ANY COMBUSTIBLE MATERIAL AS DIRECTED BY THE FIREBOX MANUFACTURER OR BY ANY LOCAL, STATE, OF NATIONAL CODES.



4520 S. MacArthur Blvd. OKC, OK 73179
 P/405.680.5600 F/405.680.9314
 DEVINICASTSTONE.COM