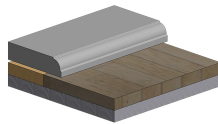
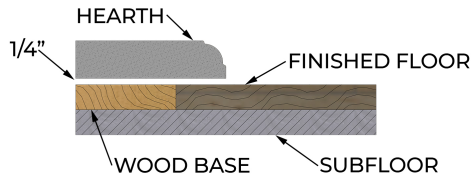


# HEARTH PREPARATION

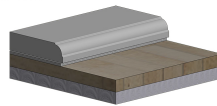
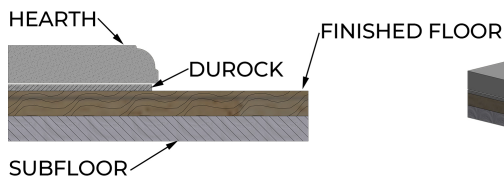
As in any construction project, the installation of your DeVinci fireplace surround must start off on a good foundation. The base of the surround is the hearth. There are many possibilities in the composition of the horizontal surface upon which your surround will rest. Our representatives work with customers to identify the appropriate installation options for the hearth. The installation options include but are not limited to, the following.

## Prior to Finished Floor Installation



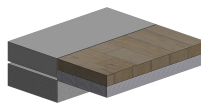
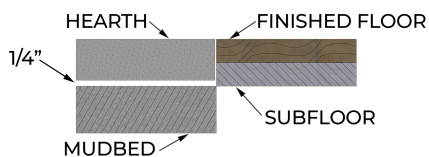
A wood or Durock base measuring approximately two inches shorter than the hearth's width and depth dimensions on the front and both sides is screwed to the floor. The height of this base is equal to the thickness of the finished floor product. The hearth is then installed on one-quarter inch (1/4") spacers with its edges overhanging, using construction adhesive. This will allow the installer to slide the finished floor product under the hearth, and any remaining gap should be caulked with a color-matched sanded caulk. The height of the hearth from the subfloor will be the profile height, plus the thickness of the finished floor product, plus 1/4".

## On Top of Finished Floor



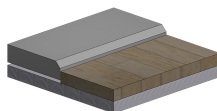
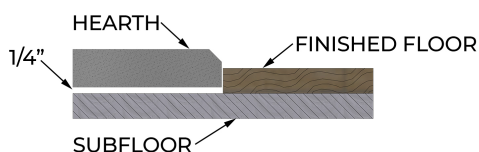
When installed on top of a finished floor, the hearth is installed on one-quarter inch (1/4") Durock using construction adhesive. The height of the hearth is the profile plus 1/4".

## Flush with Finished Floor



For the top surface of the hearth to fit flush with the finished floor, the base upon which it sits must be recessed by a measurement equal to the profile plus one-quarter inch (1/4"). The hearth is installed on 1/4" spacers using thin-set or construction adhesive. The finished floor should also be cut back on the front and sides to allow for grouting or caulking with color-matched sanded caulk.

## Partially Above Finished Floor



When the hearth is mounted on the sub-floor, it is installed on one-quarter inch (1/4") spacers using thin-set or construction adhesive. The height of the hearth, from the sub-floor, will be the profile plus 1/4". The finished floor should also be cut back on the front and sides to allow for grouting or caulking with color-matched sanded caulk.

# HEARTH PREPARATION

As in any construction project, the installation of your DeVinci fireplace surround must start off on a good foundation. The base of the surround is the hearth. There are many possibilities in the composition of the horizontal surface upon which your surround will rest. Our representatives work with customers to identify the appropriate installation options for the hearth. The installation options include but are not limited to, the following.

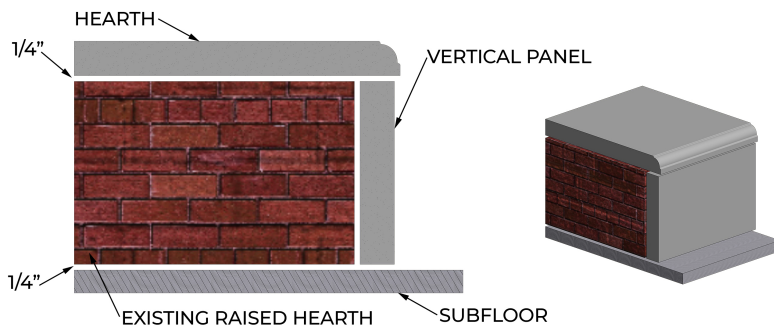
## Raised Hearth

Our raised hearths are custom designed and custom cast for each individual application.

They consider whichever of the previous scenarios that are applicable along with the height of the firebox of the existing horizontal surface.

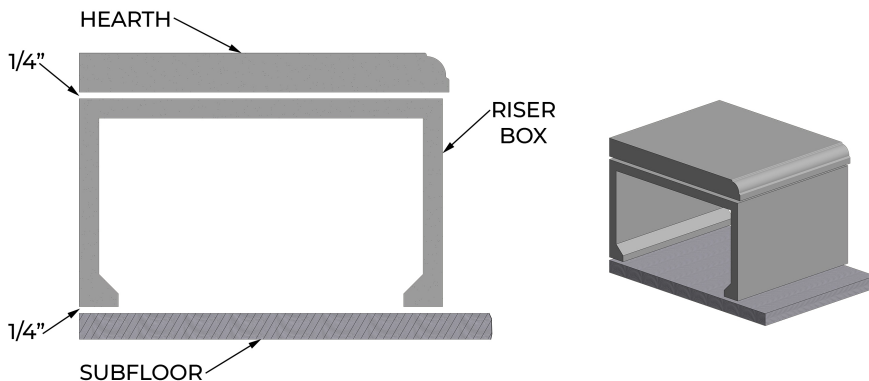
We also address two different options, please see below.

### Raised Hearth - Option 1



Cladding an existing raised hearth. In this option, we create custom molds and cast hearth pieces along with vertical panels that will be adhered to and cover an existing raised hearth.

### Raised Hearth - Option 2



A raised hearth is installed where there is no pre-existing raised hearth. In this option, we create custom molds employing a unique labor-saving design. In our design, we cast three individual riser boxes upon which the hearth is installed. This design negates the need to assemble the risers individually from multiple stones, which are difficult to connect and provide a much more unstable base.

If you need assistance, we are here to help. Our staff is available from 8am until 5pm CST, M-F, and are more than happy to assist you with any questions regarding your design or product selection. Please contact us at 405.680.5600. For additional support, you may send a fax or email to 405.680.9314 or [sales@devincicaststone.com](mailto:sales@devincicaststone.com). Our design team will contact you to review your question or concerns.

**\*\*Local building codes should always be consulted before beginning any construction project\*\***